



DIGITAL CARE – ONE YEAR INTO COVID AND HERE TO STAY

Alan Hughes, Principal, LIT Healthcare

Webinar

Wednesday, 09 June 2021, 15:00 BST

A Word From Today's Chairman



Zoë Buckingham

Managing Director

Zoë Buckingham Ltd



FS Club

Platinum Sponsors



THE GOVERNMENT OF MOSCOW
The Department for External Economic and International Relations of Moscow

Gold Sponsors



Silver Sponsors



THE TECHNIMUM GLOBAL
SERVICE WITH INTEGRITY



expert.ai



Bronze Sponsors



Personal Sponsors



GIBRALTAR
STOCK EXCHANGE

Today's Agenda



- 15:00 – 15:05 Chairman's Introduction
- 15:05 – 15:25 Keynote Presentation – Alan Hughes
- 15:25 – 15:45 Question & Answer

Today's Speaker




Alan Hughes

Principal

LIT Healthcare

Digital Care – One Year Into Covid And Here To Stay

Your presenter – Alan Hughes, LIT Healthcare, a new boutique firm

International Healthcare Specialist – Alan Hughes	
	<p>Overview: Alan brings over 20 years of international healthcare advisory, working alongside providers and policymakers on the latest international trends. He is a panelist and healthcare commentator at summits across the UK, Ireland and the Gulf.</p> <p>Key themes he has worked on recently:</p> <ul style="list-style-type: none">- <i>payment reform, NHSE policy and organisational development</i>- <i>digital care, residential and acute care strategy</i>- <i>special project and business case support to NHS leadership teams</i> <p>For 12 years he worked as a healthcare management consultant and policy strategist at KPMG. Prior to this he was in Investment Banking on Wall St and the City of London working on 30 M&A healthcare transactions and five IPOs across Life Sciences, nursing and acute care. He also worked on a Global Strategy project for Novartis in Switzerland.</p> <p>LIT Healthcare Ltd In 2020 Alan launched an independent consultancy, LIT Healthcare Ltd, 'bringing insights and interim support to the healthcare market'. www.lithcadvisory.com</p> <p>Healthcare governance and voluntary board experience Alan served for four years on the National Children's Hospital Board in Dublin (Tallaght) and is a Board nominee for one of the Royal Colleges. In late 2020 he joined Ireland's National Immunisation Advisory Committee as a voluntary lay member.</p>

Alan Hughes
Healthcare &
Policy Specialist

Our agenda for today

- 1 – One year on from our Z/Yen webinar June 12th 2020**
- 2 – Following the money and answering today's key questions**
- 3 – Digital care trends and Artificial intelligence application, globally**
- 4 – Artificial intelligence... to the rescue?**

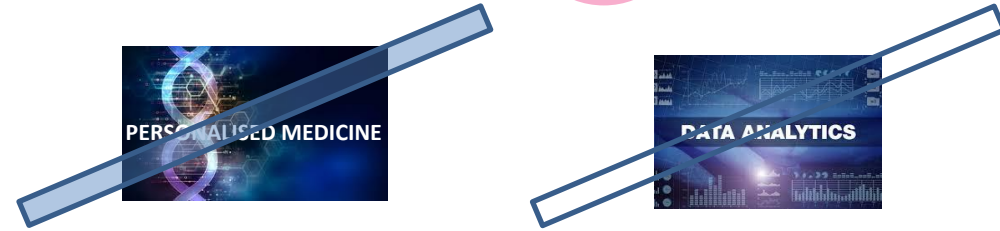


Foreword

What are we covering?



What are we not covering?

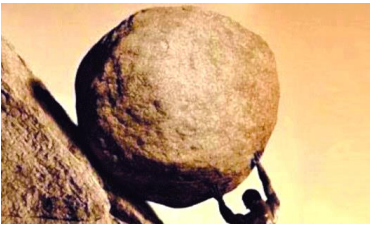


Artificial Intelligence: Policy-makers in healthcare refer to AI “as the capability of a computer program to perform tasks or reasoning processes that we usually associate with intelligence in a human being.” e.g. subject to appropriate processes, AI enables text, images and patient data analysis.



1. One year on: Why did Digital Care accelerate? *(June 12th 2020 edits?)*

...Achieving economic resilience



...Acceptance of complementary tools



...Adoption accelerates AI and personalised medicine ambitions



A healthy economy is a more resilient and successful economy

Reference sources: Z/Yen and LIT Healthcare June 12th 2020

1. One year on: “Why did Digital Care accelerate?” *(June 12th 2020 edits?)*

Care provision ~~will~~ involves more virtual and online care solutions to:

1. *address significant ~~and in many cases~~ unprecedented elective care waiting lists*
2. *enable a care workforce ~~already under pressure~~ e.g. accessing; scheduling; rostering...*
3. *support greater collaboration as policy-makers blend and regulate older structures with innovation*
...and attract significant capital flows



Following the money from a public healthcare funding perspective and....

2. ...Following the money from a private investor perspective

Q1 2019-Q1 2020: Valuations when a 10x+ sales multiple was impressive...

Teladoc
(US)
MC: \$12bn

Babylon
(UK)
\$2bn
(Series D)

Ada
(Ger)
\$50m
Series A



...June 2021: 10x+ is now the norm...

Teladoc
(US)
MC: \$25bn
(12MonHigh Q420)

Babylon
(UK)
\$4bn (SPAC)

Ada (Ger)
\$100m
Series B
(Pharma)

Key messages:

Many investors have seen 2x valuation increases

Consolidation and cross-border M&A is well underway with larger players well-funded and on M&A trails...

Next chapter of Digital care innovation has begun enabled by AI...





Local, regional and Global players emerging - a selection to monitor for the next three years:

Dr Care Anywhere (UK); KRY (Swe); Doctrin (Swe); Webdoctor (Irl); SilverCloud (Irl); Xenzone (UK); C2-AI (UK); Oviva (UK); QuitGenius (UK); My COPD (UK); My IBD (UK); Careology (UK); 11 Health (US); Doctolib (Fra); Locum's Nest (UK); DocPlanner (Poland); ImproveWell (UK); Fibrichk (UK); xWave (Irl); HealthBeacon (Irl-US); LetsGetChecked (irl); Medica (UK)



LIT HEALTHCARE
ADVISORY SERVICES

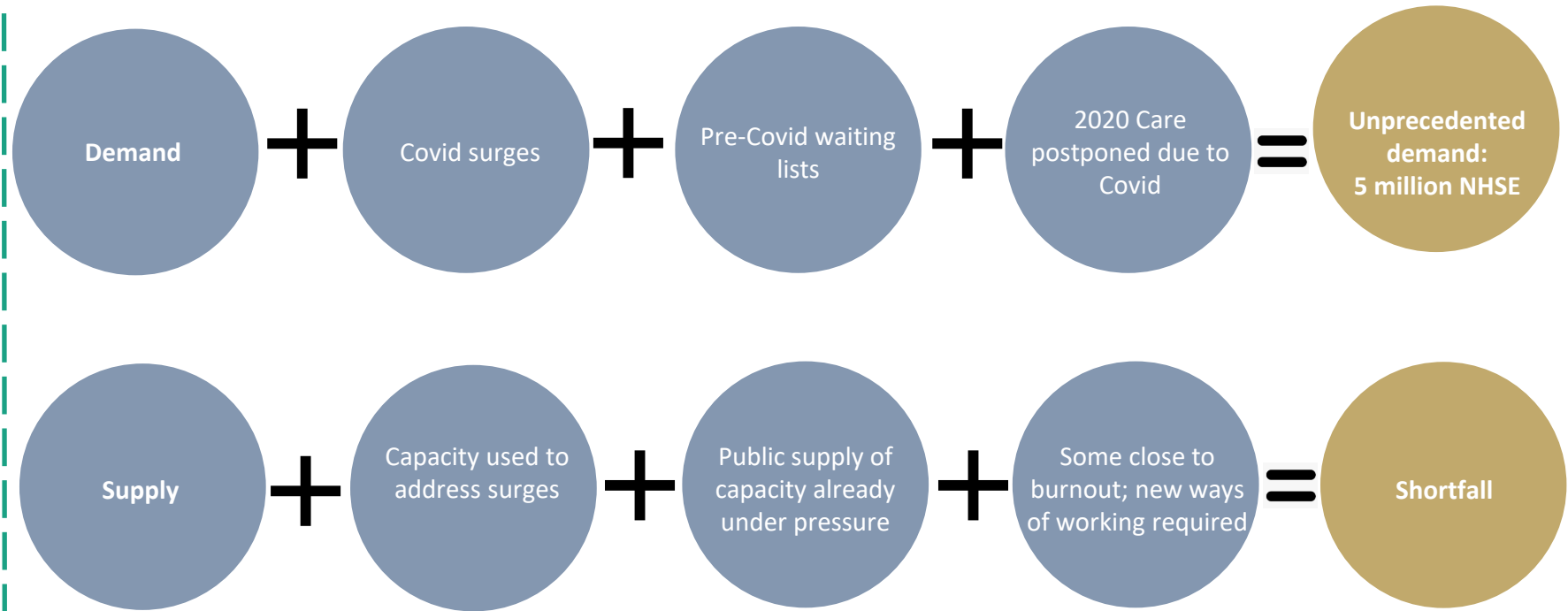
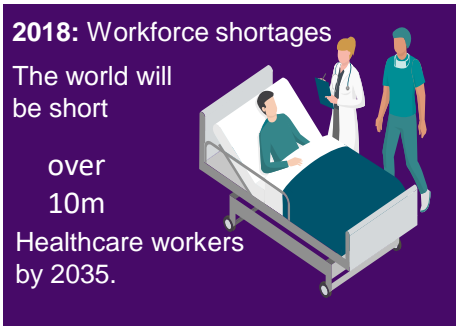
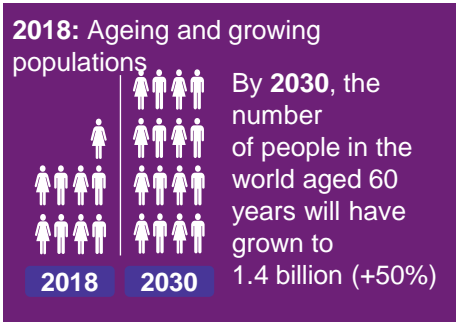
2. Following the money... and answering today's key questions:

Key questions	Answers	Commentary
Has AI in healthcare arrived?		<i>AI is essential for addressing unprecedented elective waiting lists globally</i>
From Big data to Real data – are we there?		<i>The quality of data in Electronic Health Records and Patient Admin systems is better but more alignment, integration and cyber-security required</i>
NB: Has the workforce challenge been solved?		<i>AI is enabling, empowering and accelerating our workforce but the demand for care will be relentless for the next three years to catchup post Covid</i>
Regulatory and policy moves underway		<i>Many governments embracing Digital Care and we will see much closer alignment of policy-making with care budgeting in every health economy</i>

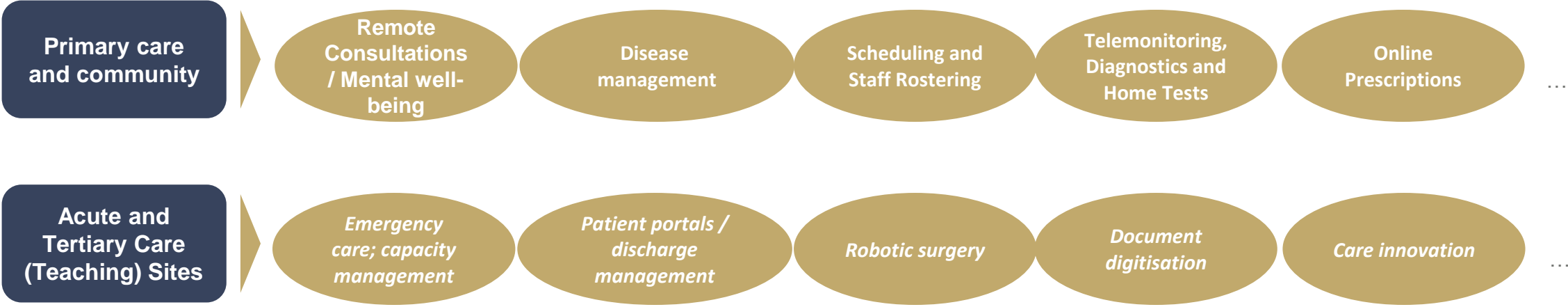


Digital care aligned with the power of Artificial Intelligence, is transforming healthcare

3. Digital care trends and AI application – context:



3. Digital care trends and AI – accelerating and expanding:



Digital care aligned with the power of Artificial Intelligence, is transforming healthcare

4. Artificial Intelligence...to the rescue?

Digital solutions using AI is enabling care capacity in:

	<i>Impact</i>
1 – Clinical decisions, diagnostics	✓ ✓ ✓
2 – Self-care and wellness	✓ ✓ ✓
3 – Triage and monitoring	✓ ✓ ✓
4 – After care	✓ ✓ ✓
5 – Pathology	✓ ✓
6 – Education/Pharma trials/research	✓ ✓
7 – Care delivery (inpatient/surgical)	✓ ✓
8 – Data & operational management	✓ ✓

Each segment embracing AI and pathway integration is next



Care access and efficacy can be enabled with the appropriate application of digital care and AI

4. Artificial Intelligence...to the rescue? How:

June 2021:
Unprecedented
High (5 million)

Teleradiology

*Triage and
preventative care*

*After care and
rehabilitation*

*Disease
management*

Elective care waiting lists reducing.....

2023:
'Normal?'



Care access and efficacy can be enabled with the appropriate application of digital care and AI



LIT HEALTHCARE
ADVISORY SERVICES

Reference sources: Healthcare Business International 2020 and McKinsey EIT '2020 Transforming Healthcare with AI'.

4. Digital care players – survival and innovation

Operating models: From 'Back office' to 'Clinical support' to 'Front office'. The growing Tech Stack..

Characteristics of success: Product breath; connectivity and integration; aligning with traditional payors (Govt/PMI...)

Cybersecurity: Traditional Care Providers Requirements And Digital Care Company Requirements – 'security by design'

Digital care – evolving market propositions: 1) Enabling digital health companies 2) Competing with legacy care providers and 3) Enabling legacy providers of care



See you in 12 months?

Thank you

Alan Hughes, Principal, LIT Healthcare
info@lithcadvisory.com
00353 87 4622662
www.lithcadvisory.com





FS Club

Platinum Sponsors



THE GOVERNMENT OF MOSCOW

The Department for External Economic and International Relations of Moscow

Gold Sponsors



Silver Sponsors



The Technium Global SERVICE WITH INTEGRITY



expert.ai



Bronze Sponsors



cuffassociates PART OF THEBES GROUP

Personal Sponsors



GIBRALTAR STOCK EXCHANGE

Thank You For Listening



Forthcoming Events

- Thu, 10 Jun (16:00-16:45) Changing The World One Mistake At A Time: The Work Of The Library Of Mistakes
- Mon, 14 Jun (15:00-15:45) Post-Pandemic: The Importance Of Corporate Reorganisation, Turnaround & Insolvency In The Economic Recovery
- Tue, 15 Jun (15:30-16:15) The Usefulness Of Useful Knowledge
- Fri, 18 Jun (11:00-11:45) Co-operation Between European & Chinese Capital Markets: Current Status, Prospects & Challenges

Visit <https://fsclub.zyen.com/events/forthcoming-events/>