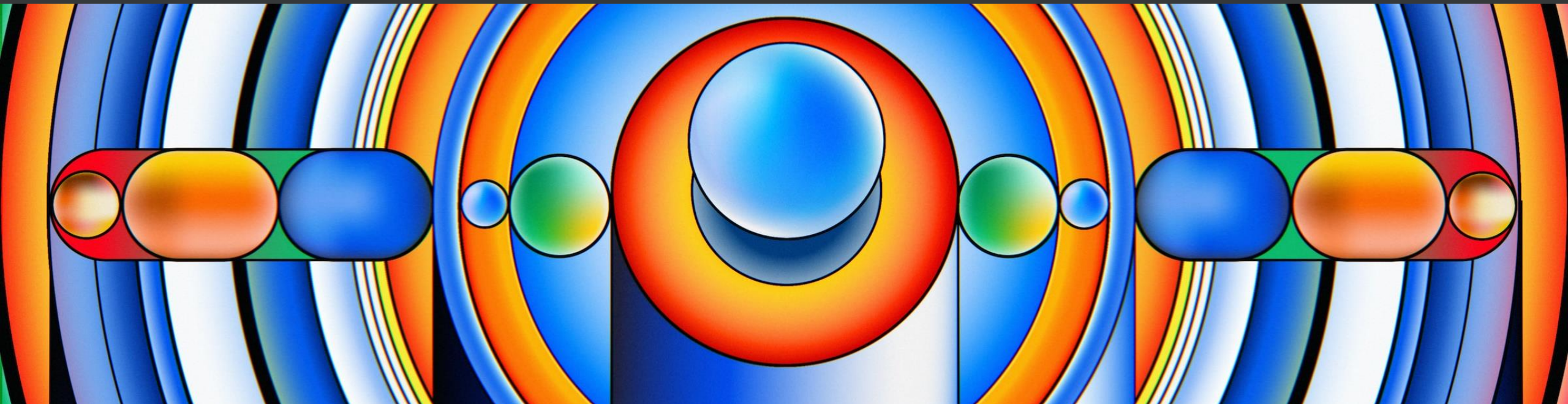




FS Club
News Events Partnerships



How AI Could Shape Our Built Environment For The Better - But Also For Worse

Karen Burns, Co-Founder and CEO, Fyma

Wednesday, 26 April 2023



A Word From Today's Chairman

Charlotte Dawber-Ashley

Manager, FS Club

Z/Yen Group





Platinum Sponsors



Gold Sponsors



Silver Sponsors



Bronze Sponsors



Contributor Sponsors





Today's Agenda



- 11:00 – 11:05 Chairman's Introduction
- 11:05 – 11:25 Keynote Presentation – Karen Burns
- 11:25 – 11:45 Question & Answer



Today's Speaker

Karen Burns
Co-Founder and CEO
Fyma





**How AI Could Shape Our Built Environment
For The Better –
But Also For Worse**

Karen K Burns, CEO & Co-founder at Fyma



Currently used in...

- Urban planning
- Real estate development and planning
- Construction
- Property management
- Demolition and recycling

... but still early days compared to other fields.

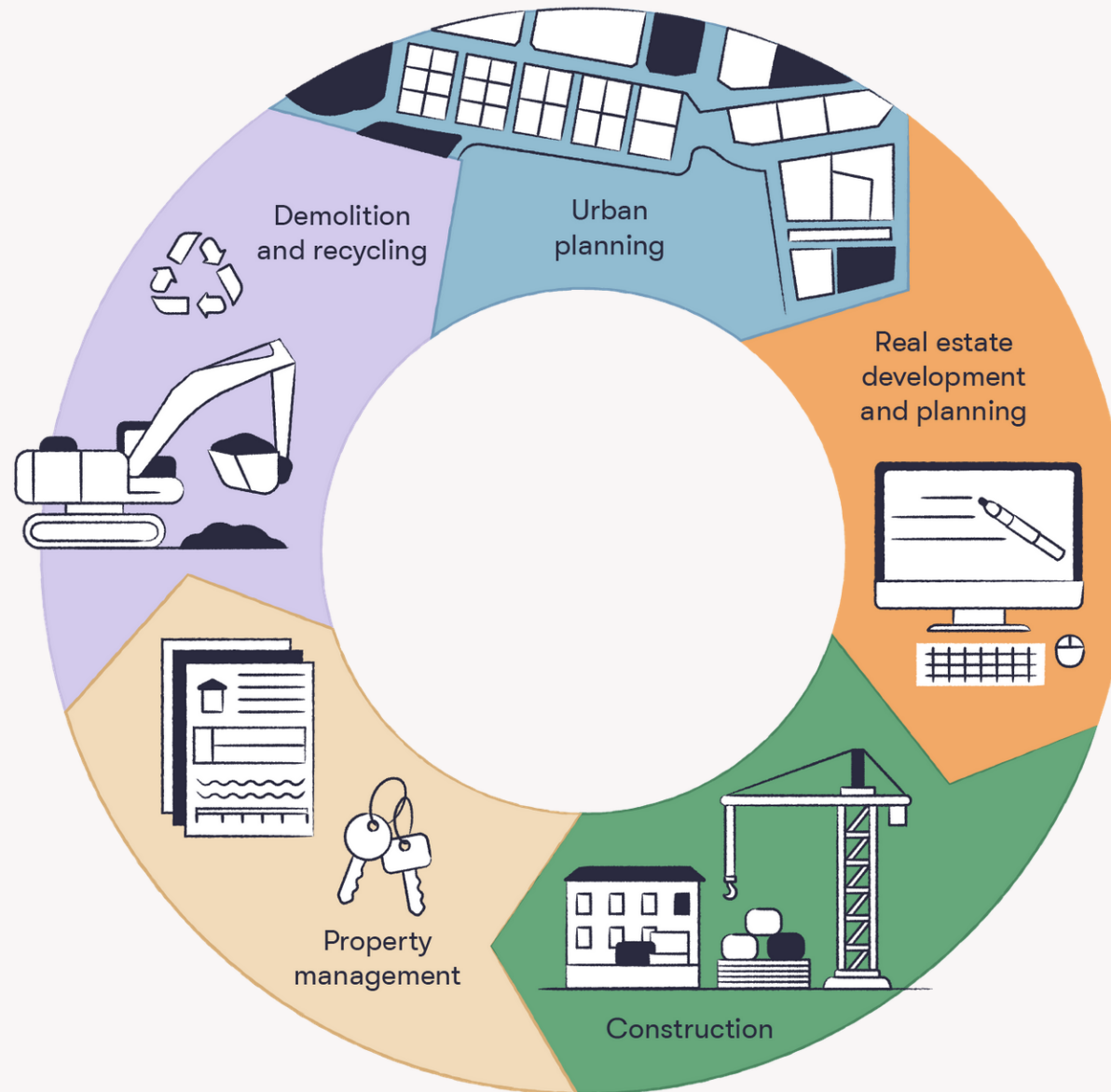
What types of AI is utilised?

From machine learning to machine vision

- NLP or natural language processing
- Time-series prediction
- Computer vision and image recognition
- Predictive maintenance
- Smart buildings -> predictive analytics

McKinsey 21 predicts that AI offers a 40% automation potential in real estate, which is in the same region as that reported by PwC22. This figure covers all grades.

The real estate and construction value chain



Real estate development & planning

- Simulating traffic models
- Uncertainty and expectation management
- Hand-in-hand with human judgment and expertise

Construction

- Occupational safety
- Supporting project management on construction sites with data from sensors and cameras
- High level of variation between construction sites -> Variability in volume and quality of data

Property management

- Smart buildings technology: energy, water, waste & optimisation of this
- Elevators
- Facilities management
- Asset data and working with the insights generated

Demolition and recycling

- Construction and demolition generate 40–50% of the world's waste
- Computer vision
- Robotics
- Data utilisation in its infancy; regulatory frameworks needed (EU, when is waste a new material? What baseline? Etc)

AI & BIG DATA


Using Open Source AI To Map Global Pollution Through Imagery

Kalev Leetaru Contributor 

I write about the broad intersection of data and society.

[Follow](#)

Jun 12, 2019, 09:35pm EDT

 This article is more than 3 years old.

[f](#)

[t](#)

[in](#)



Urban planning

- Using the data still in its infancy
- Mostly used for better analytics, predictions, to support investment decision-making
- Heavily reliant on quality of data
- Current sources reliant on sensors, manual counting (!), mobile data tracking (WiFi and signal)
- Very EMOTIONAL: gut feeling vs data
- Zooming out: Gig economy, location-dependent jobs are in decline, driverless cars + shared transport and micromobility





ChatGPT



Examples

"Explain quantum computing in simple terms" →

"Got any creative ideas for a 10 year old's birthday?" →

"How do I make an HTTP request in Javascript?" →



Capabilities

Remembers what user said earlier in the conversation

Allows user to provide follow-up corrections

Trained to decline inappropriate requests



Limitations

May occasionally generate incorrect information

May occasionally produce harmful instructions or biased content

Limited knowledge of world and events after 2021

Send a message. 

ChatGPT



Examples

"Explain quantum computing in simple terms" →

"Got any creative ideas for a 10 year old's birthday?" →

"How do I make an HTTP request in Javascript?" →



Capabilities

Remembers what user said earlier in the conversation

Allows user to provide follow-up corrections

Trained to decline inappropriate requests



Limitations

May occasionally generate incorrect information

May occasionally produce harmful instructions or biased content

Limited knowledge of world and events after 2021

Send a message.

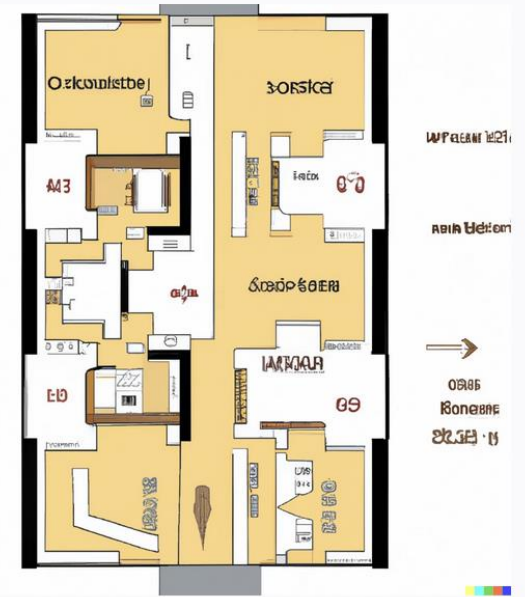
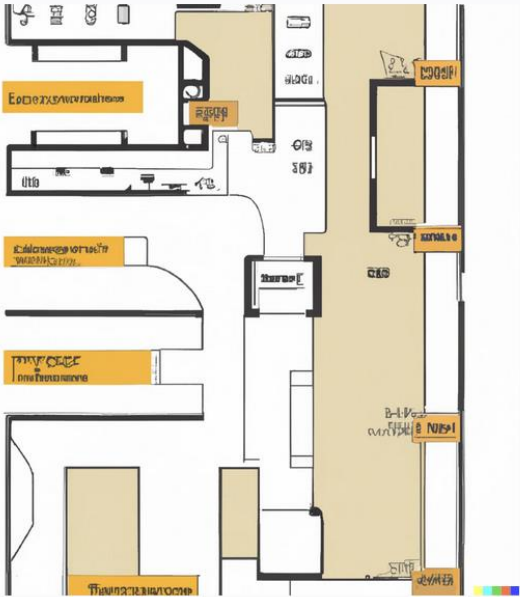


Edit the detailed description

Surprise me Upload →

floorplan for a shopping mall with 2 entrances, 2 elevators, 2 floors, 6 shops

Generate



Edit the detailed description

Surprise me

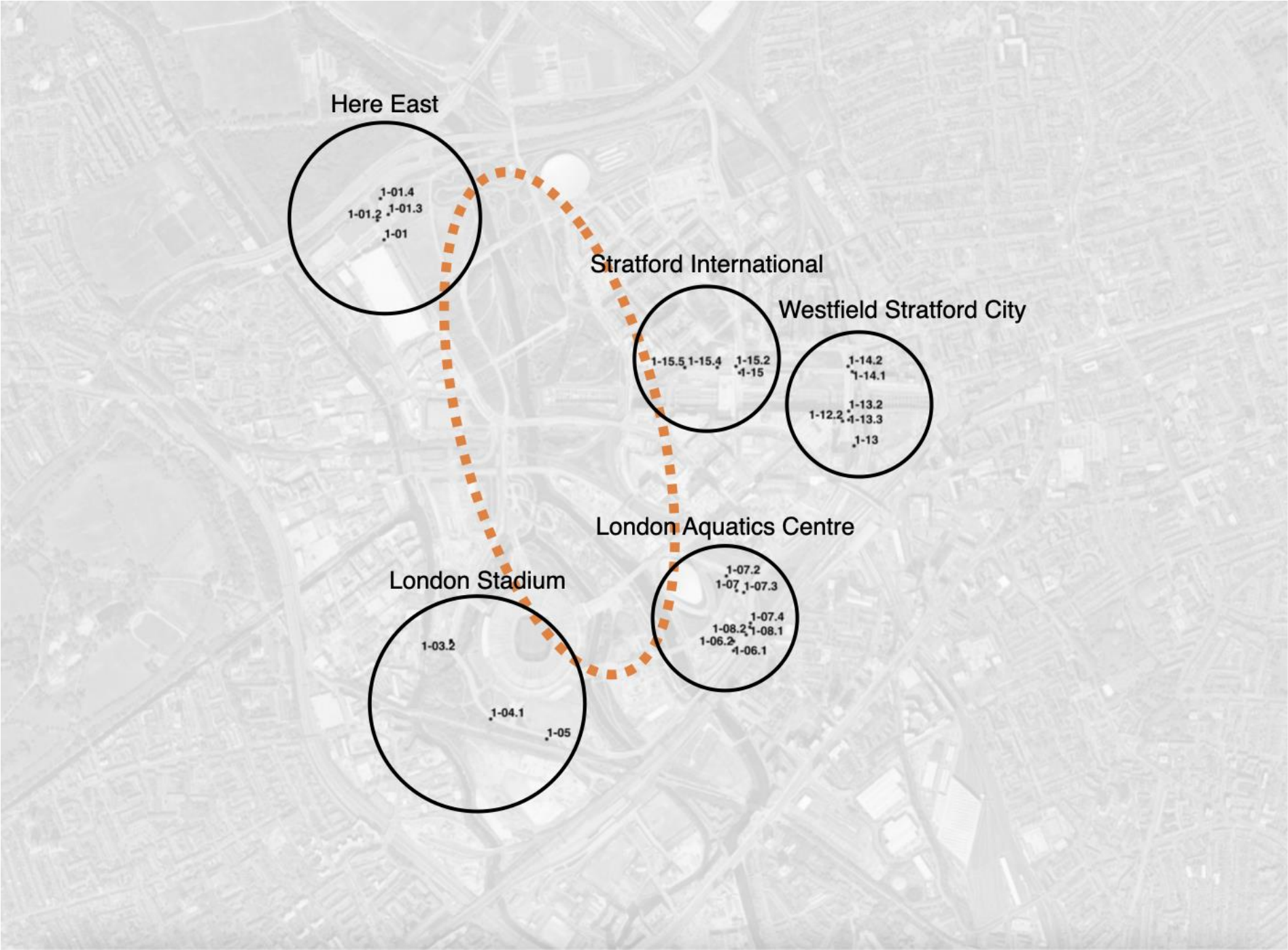
Upload →

beautiful single family home, new england style. 2 floors, white facade. 4 windows

Generate



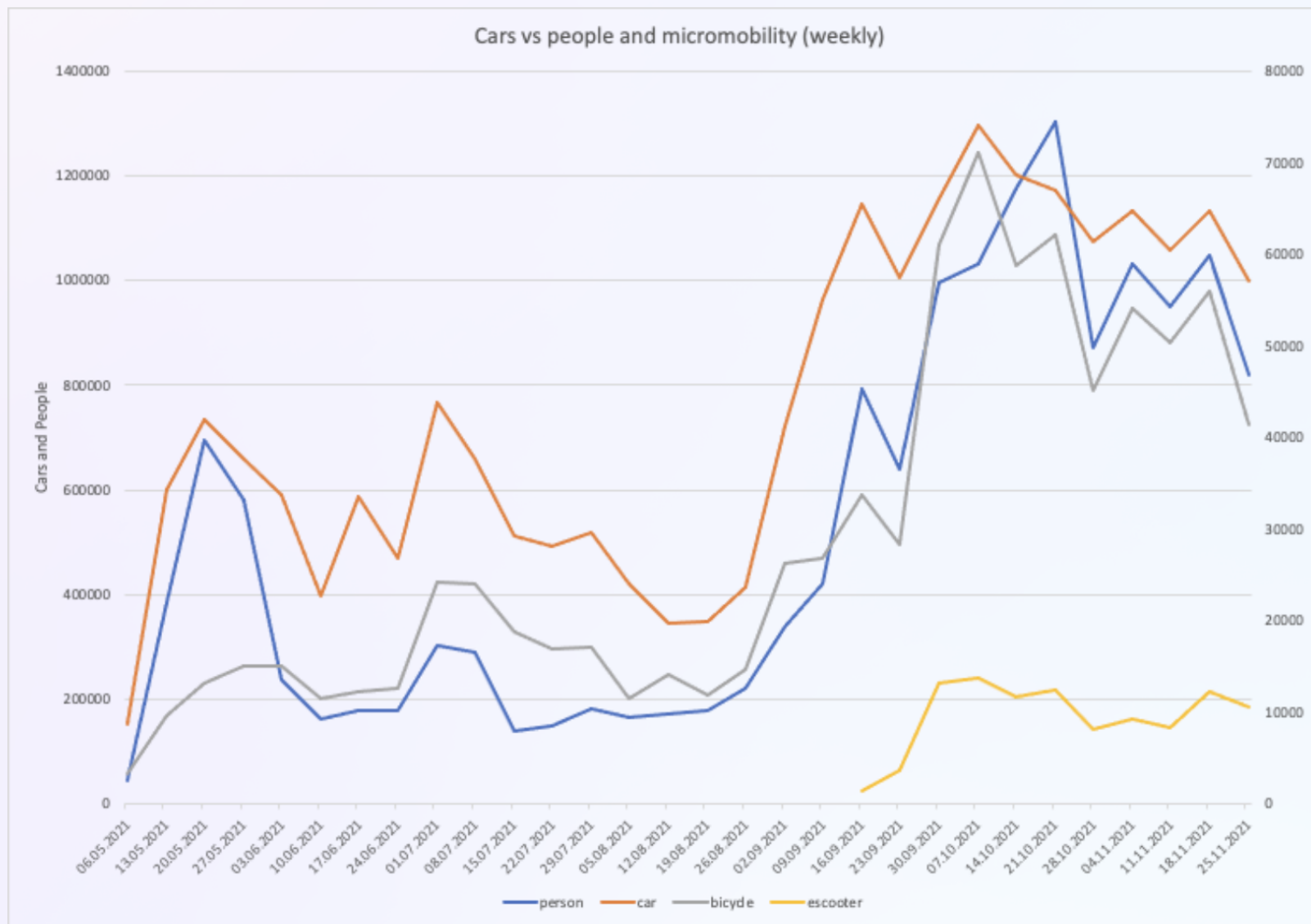




HEADLINE INSIGHTS

MODAL SHARE

There has been a major increase (around 50%) in all traffic modes after the lockdown has ended. It can also be seen that the amount of bicycles rise after the amount of cars



Thank you!

Q&A



Comments, Questions & Answers



横浜市営地下鉄

レールライン

Yokohama City Subway



観光案内所

Question & Answer

问讯处 詢問處 안내소

西口

West Exit

西出口 서쪽



Platinum Sponsors



Gold Sponsors



Silver Sponsors



Bronze Sponsors



Contributor Sponsors





Thank You For Participating



Forthcoming Events

- Thu, 27 Apr (08:00-09:30) The Future Of Green Hydrogen - BizTech Huìhuà Chat
- Thu, 27 Apr (11:00-11:45) Esop Sofa: Hot Topics In Employee Share Ownership – Newspaper Review VI
- Tue, 2 May (10:00-10:45) Harnessing Markets To Deliver Paris
- Thu, 04 May (14:00-14:45) The Economic Consequences Of IT: The IT Revolution’s Meager Benefits & Major Schisms

Visit <https://fsclub.zyen.com/events/forthcoming-events/>

Watch past webinars <https://www.youtube.com/zyengroup>