



FS Club

News Events Partnerships

'Innovation As If The Future Mattered': EIT Climate-KIC On What To Do With Covid-19 Recovery Funding

Webinar

Wednesday 29 July 2020





FS Club

News Events Partnerships

A Word From Our Chairman



**Professor Michael
Mainelli**

Executive Chairman

Z/Yen Group



FS Club

Platinum Sponsors



Gold Sponsors



Silver Sponsors



Bronze Sponsors



Personal Sponsors



Agenda



FS Club

News Events Partnerships

- 10:00 – 10:05 Chairman's Introduction
- 10:05 – 10:30 Keynote Address - Kirsten Dunlop
- 10:30 – 10:45 Questions & Answers



FS Club

News **E**vents **P**artnerships

**'Innovation As If The
Future Mattered':
EIT Climate-KIC On What
To Do With Covid-19
Recovery Funding**



Kirsten Dunlop
Chief Executive
EIT Climate KIC



Climate-KIC

Innovation as if the future mattered...

What to do with COVID-19 recovery funding



EIT Climate-KIC is supported by the EIT, a body of the European Union

Dr. Kirsten Dunlop | 29th July 2020



@ClimateKIC



BE SURE
TO WASH YOUR
HANDS AND ALL
WILL BE WELL.

COVID-19

RECESSION

CLIMATE
CHANGE



THE IMF AND COVID-19 (CORONAVIRUS)

Fiscal Policies for a Transformed World

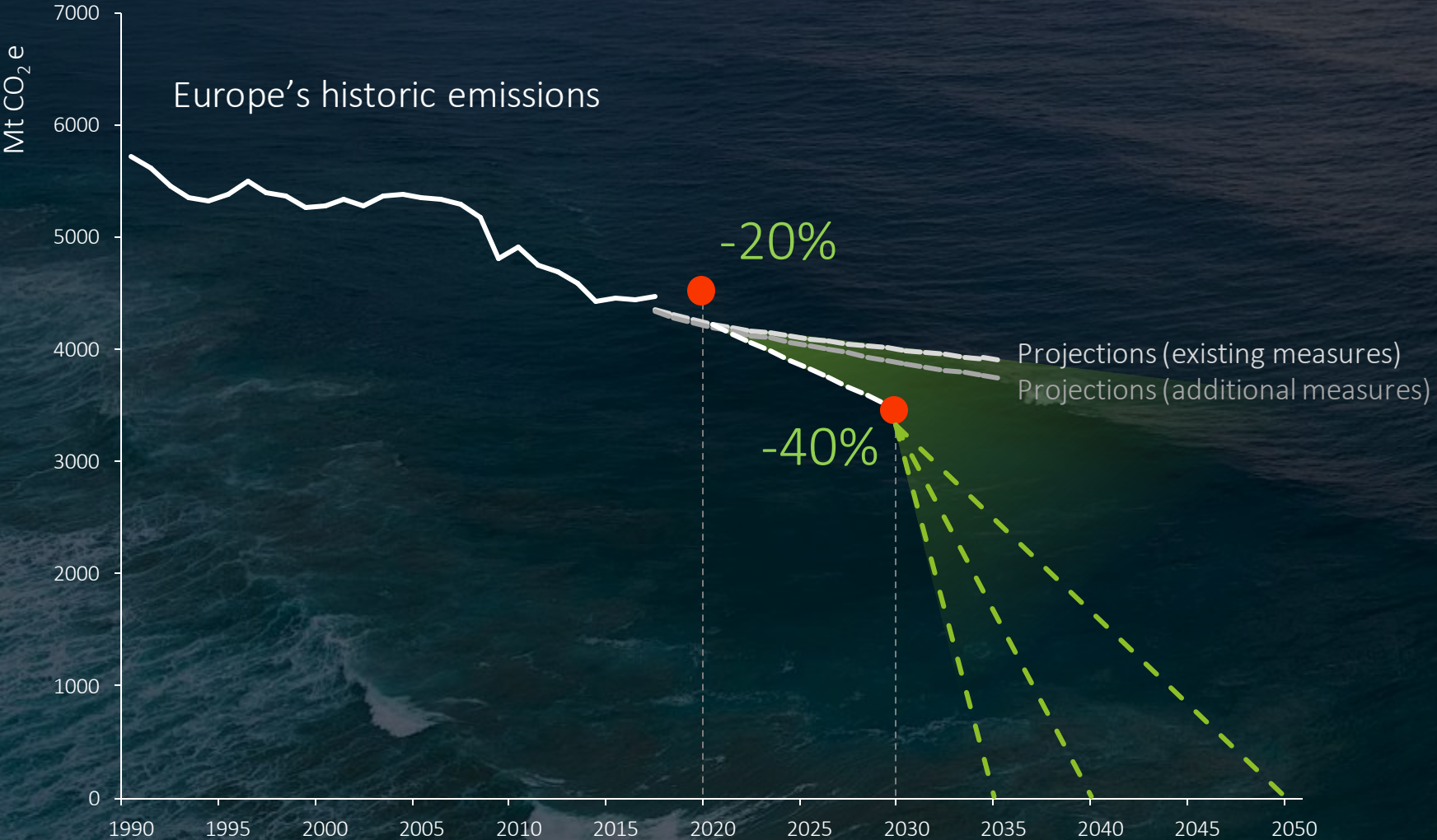
July 10, 2020

The ongoing COVID-19 pandemic has already prompted an unprecedented fiscal policy response of close to \$11 trillion worldwide. Policymakers will have to keep the public health response their #1 priority while retaining supportive and flexible fiscal policies and preparing for economic change.



EIT Climate-KIC
BP2019

The current innovation model and investment logic are not delivering a 1.5 degree world.




Achieving net zero in time means decarbonising at least **6 x faster** than the global average.

2040 is the higher probability scenario in the IPCC Special Report: Global Warming of 1.5 ° C (SR1.5), 2018

Source: <https://www.eea.europa.eu/data-and-maps/indicators/greenhouse-gas-emission-trends-6/assessment-2>

Change
is changing



A person's hands are shown holding a handful of dark, rich soil. The person is wearing a green tank top. The background is a blurred green field, suggesting an agricultural or natural setting. The overall image has a dark, semi-transparent overlay.

EIT Climate-KIC is a climate innovation agency and community working to catalyse these transformations, using systems innovation as a key tool.

EIT Climate-KIC: a community of innovators acting together

2000+

organisations
made up of:



Corporates



Start-ups



Universities



Civil society



City governments



Regional governments



National governments

Our start-ups are taking off



Top six earners by investment raised

Ynsect **\$172.3M**

tado° **\$111.3M**

Lilium Aviation **\$101.4M**

Volocopter **€81.2M**

Thermondo **€63.3M**

vClimeworks **€29.4M**

Innovation is essential.
But not as we have
been doing it.

We need a
**new model of
innovation** to catalyse
systemic change.

...triggering
massive leaps in
decarbonisation
and resilience.

...to transform
places, people,
sectors and
value chains...

Connected
innovations...

...acting
simultaneously

...across
multiple levers
of change

10 years of experience has taught us that achieving the systemic change we need requires a different order of innovation.

Incremental

System innovation

Transformational

Project finance model

Portfolio finance model

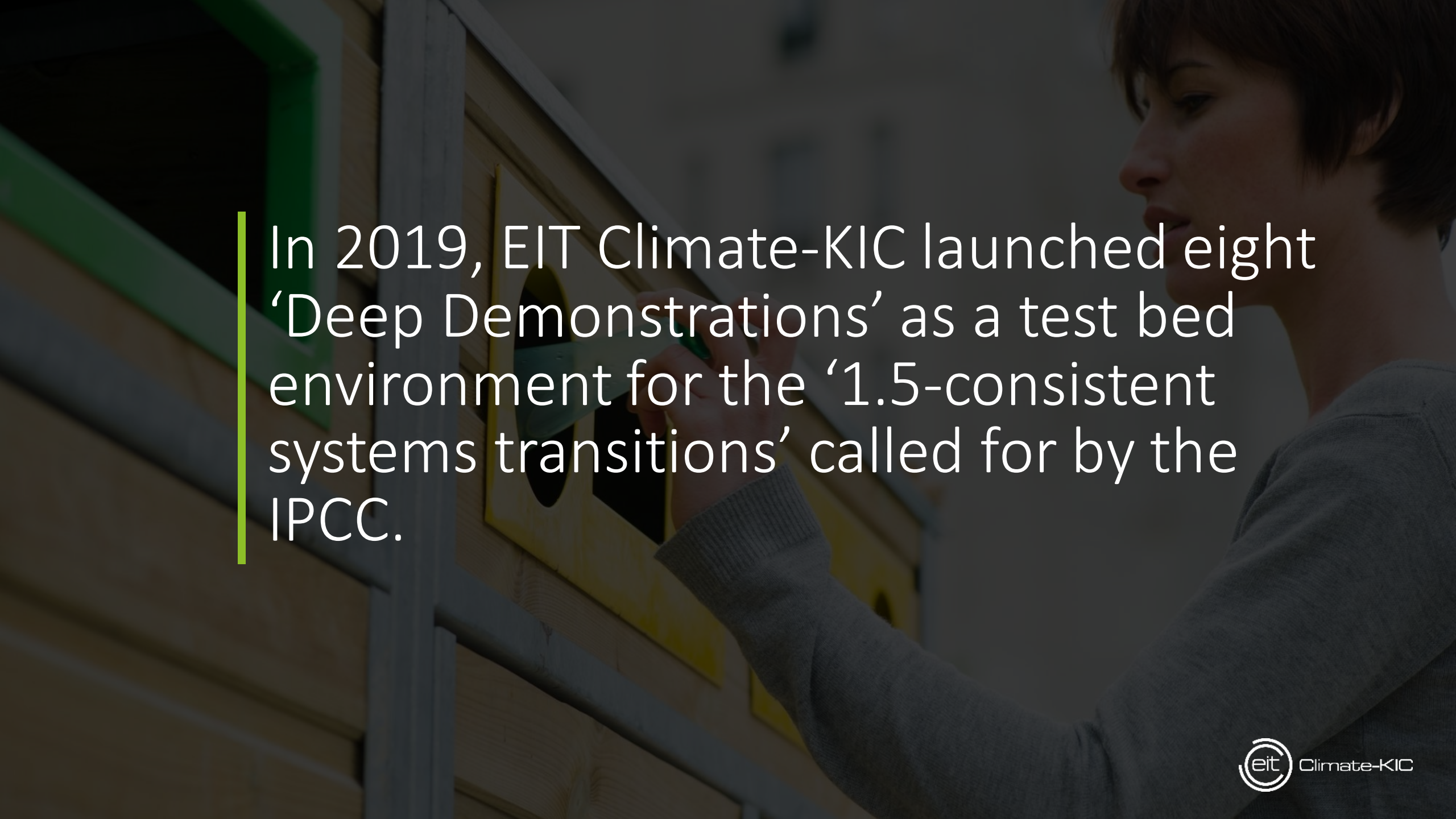
Single projects and incremental change

Portfolio of connected innovation projects that learn from each other

Siloed and fragmented activities, often focused on technological improvements

Wide appreciation of change levers



A woman with short dark hair, wearing a grey sweater, is shown in profile from the chest up. She is focused on a task, using a green-handled tool to work on a wooden structure. The structure has yellow and green accents. The background is dark and out of focus.

In 2019, EIT Climate-KIC launched eight 'Deep Demonstrations' as a test bed environment for the '1.5-consistent systems transitions' called for by the IPCC.



The world needs inspiration,
and proof that inclusive, fast
and large-scale change is possible



Healthy,
Clean Cities

Climate-friendly
Food Systems
and Diets

Just
Transformations
of Heavy
Industry Regions



01

02

08

Landscapes as
Carbon Sinks

Deep
Demonstrations

Resilient, Net-
Zero-Emissions
Maritime Hubs



07

03

06

04

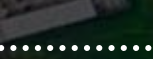
Long-termism

05

Circular,
Regenerative
Economies



Resilient
Regions



First wave



Second wave



Climate-KIC

A deep demonstration of...

Healthy, Clean Cities

Cities face an enormous challenge in becoming healthy places to live, while reaching net-zero emissions in just a few years. EIT Climate-KIC is working with the most ambitious mayors and municipalities in Europe to design portfolios of joined-up innovations capable of unlocking wholesale transformation across all city systems – from mobility to waste to energy to health and the built environment.



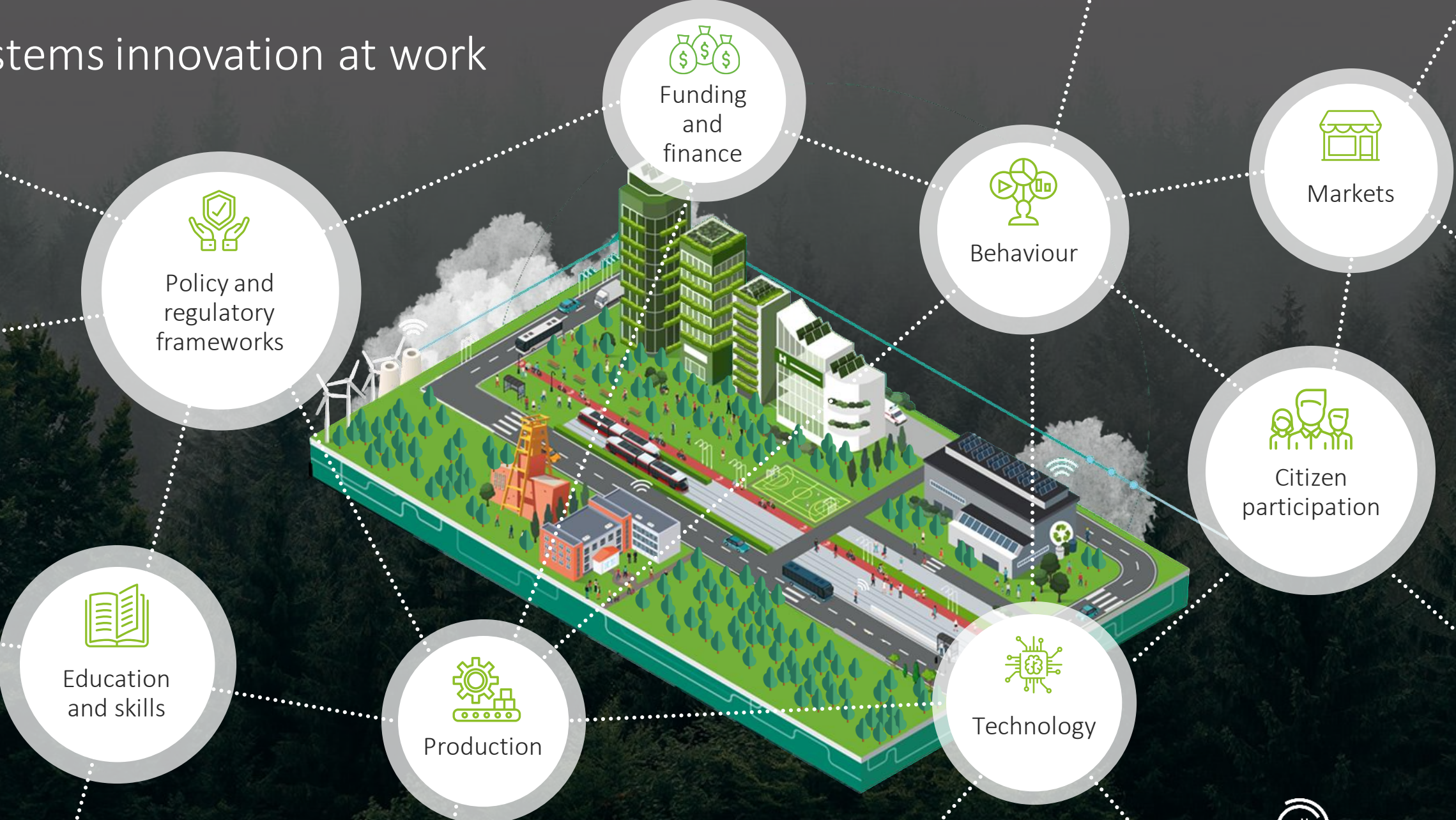
Healthy, clean cities

Problem owners

We are working with an initial cohort of fifteen city governments across Europe who have committed to ambitious, system-wide change.



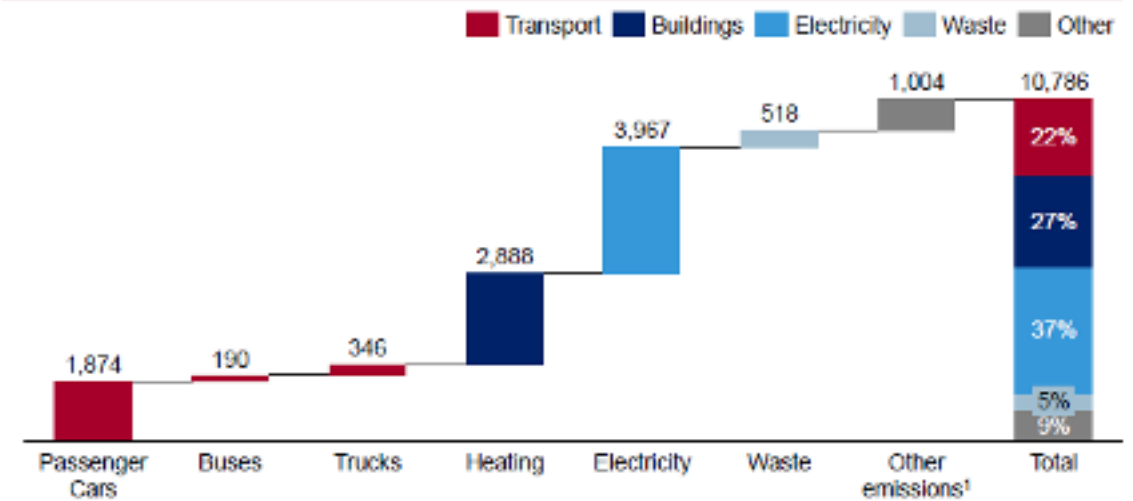
Systems innovation at work

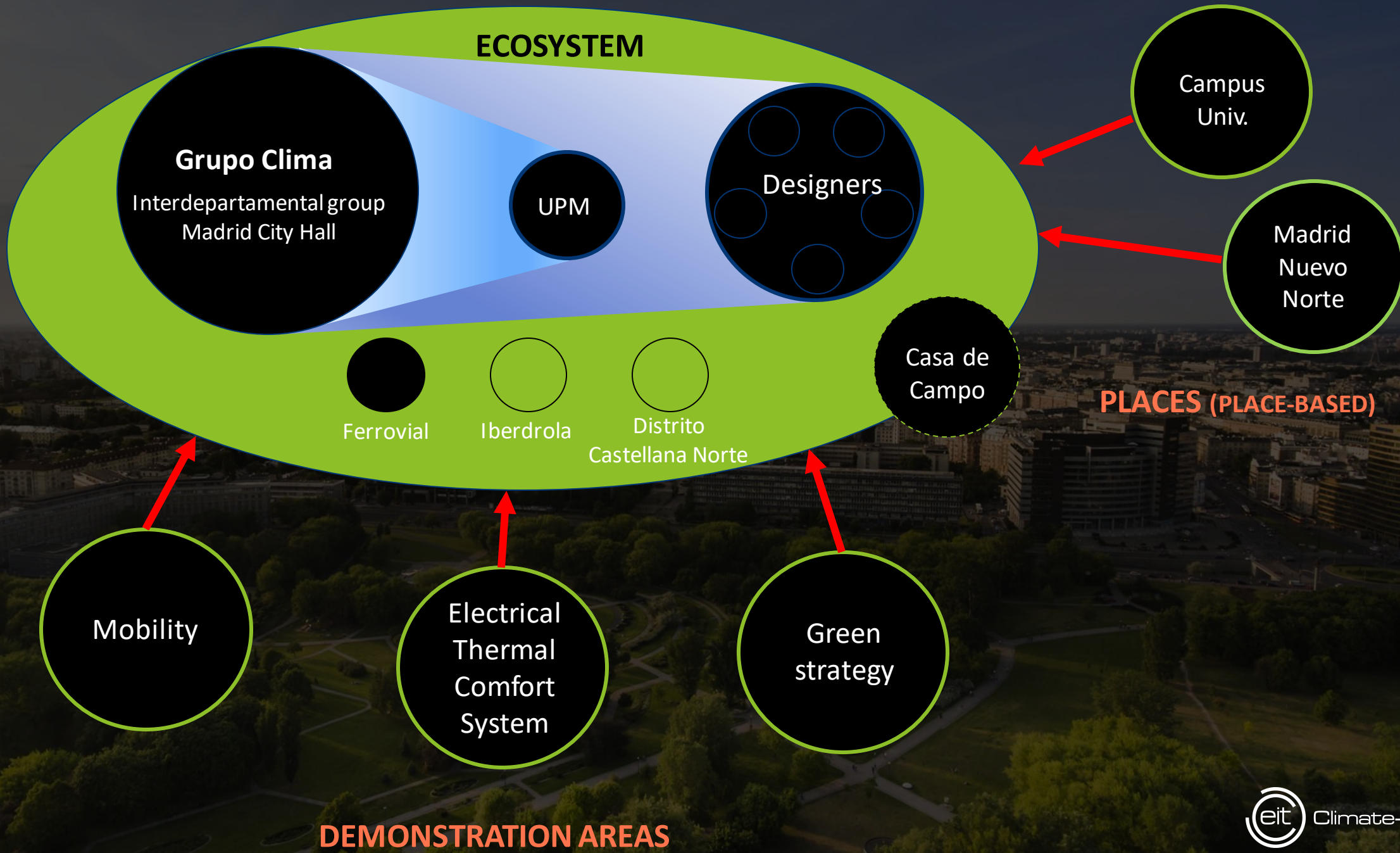


Madrid, Spain
Europe's 4th largest city
Metropolitan area: 6.791.667

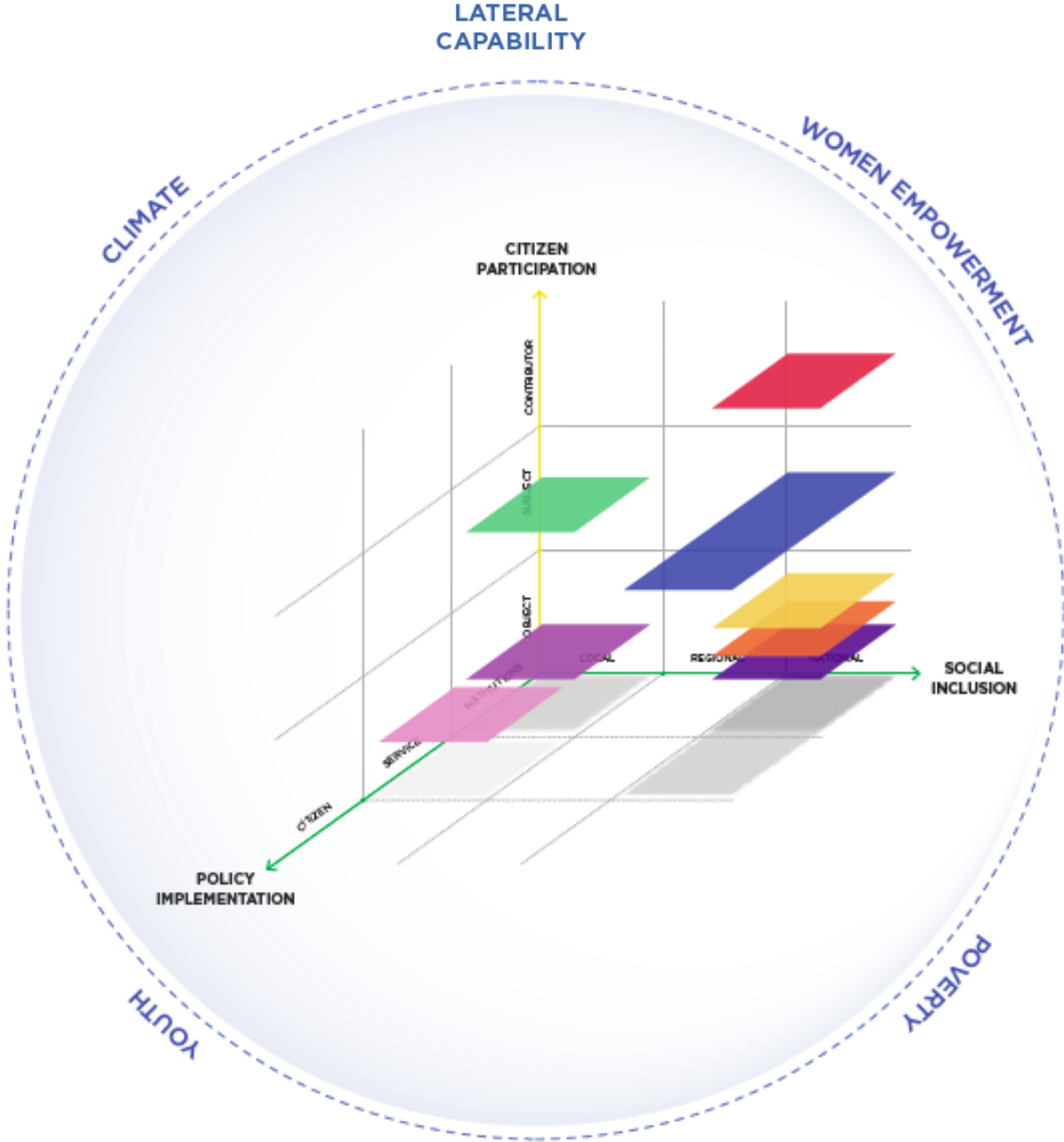
Madrid footprint in is ~11 Mton CO₂ p.a., of which a large part derives from electricity

Emissions in Madrid per subcategory
kton CO₂e, 2018





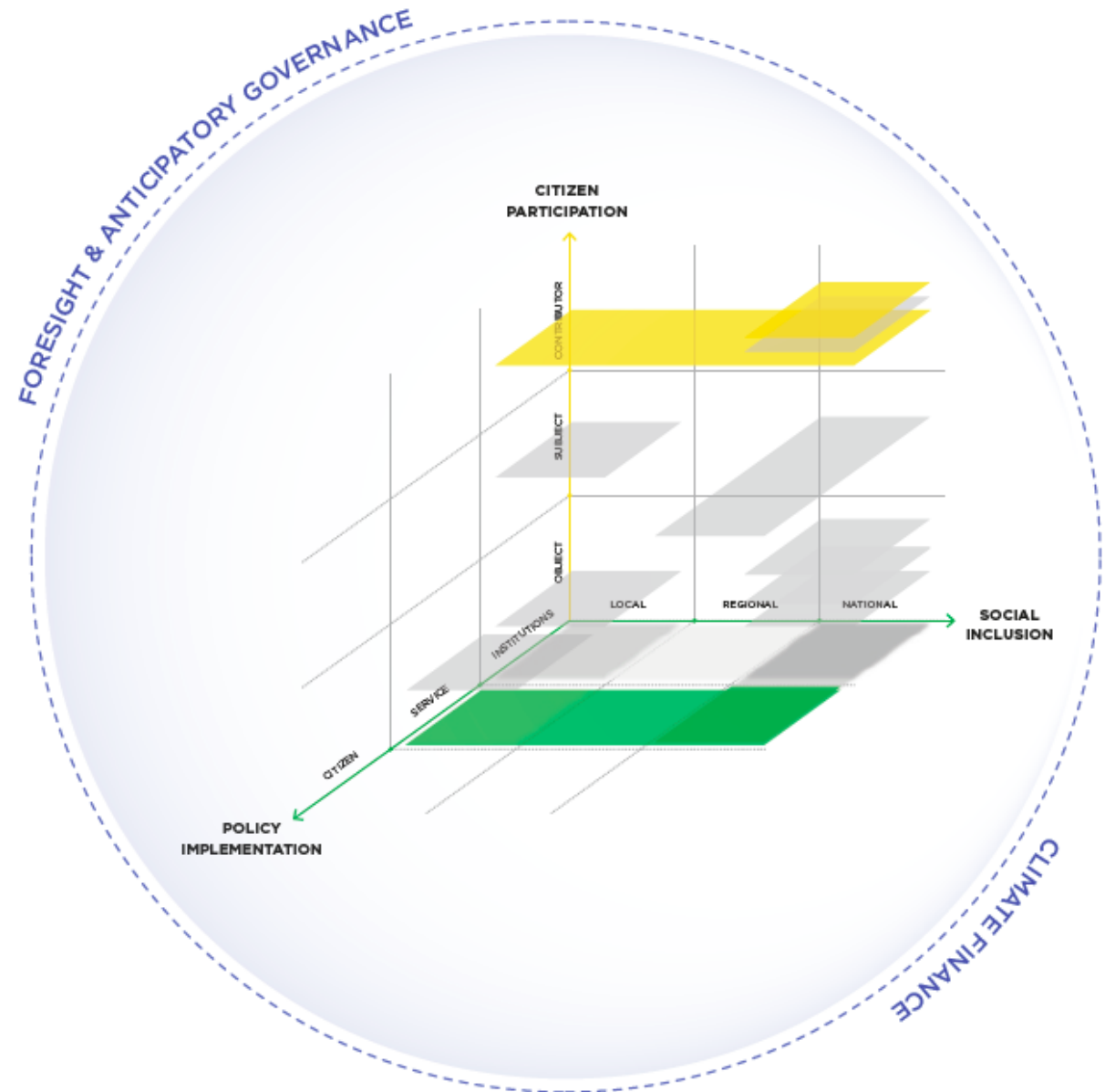
A strategic innovation portfolio to achieve systems transformation



- Public Sector Reforms
- Election Project
- Peace Architecture
- Access to Justice
- Development Data
- Hotspots
- National ID Project
- Spotlight Initiative

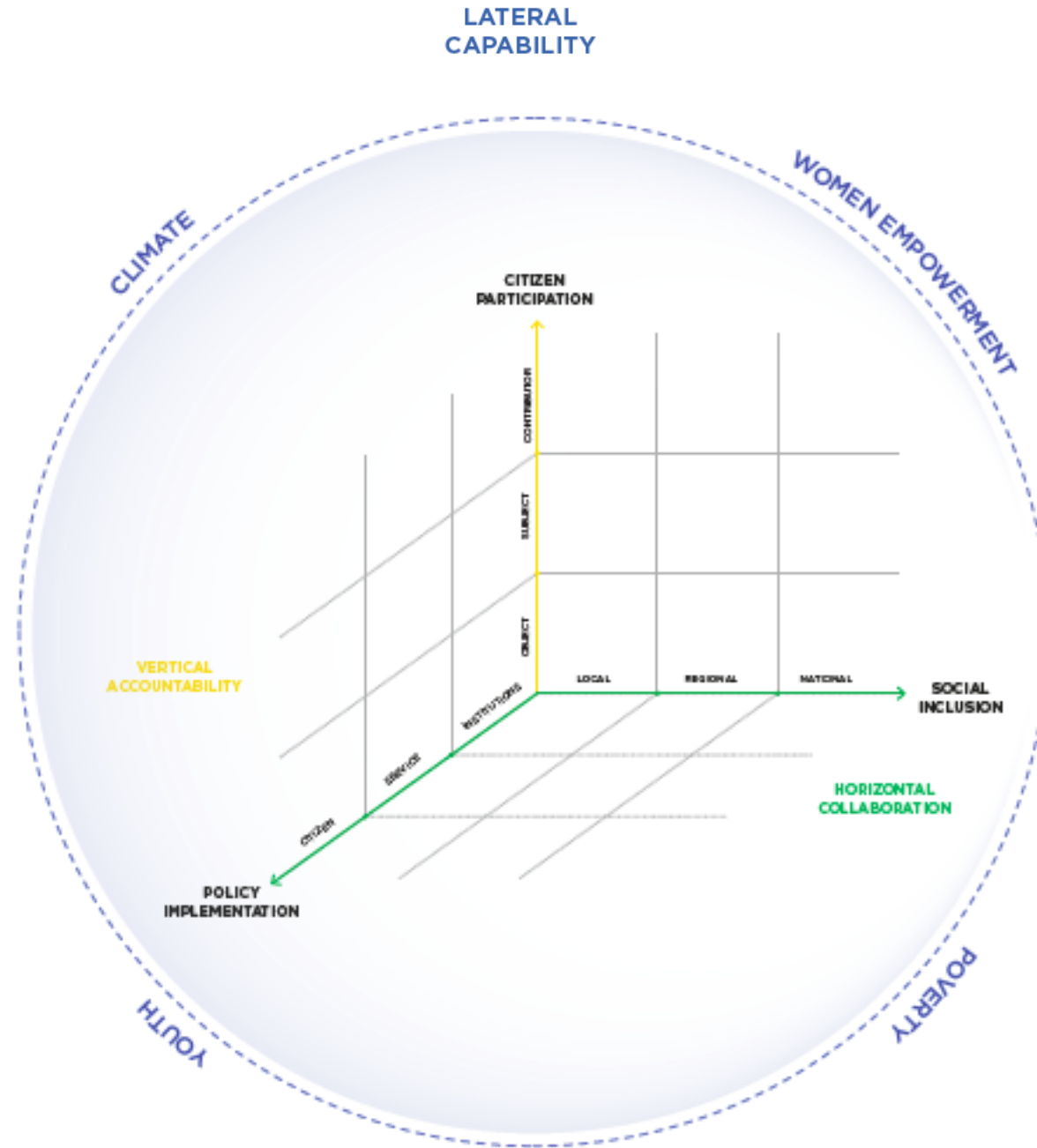
A carefully designed portfolio allows us to:

- Observe unique interdependencies in the structure and dynamics of systems
- Take new perspectives about dynamics of collaboration, accountability and foresight
- Identify propositions for actions that can provide intelligence about how to achieve systems transformation



The principal value of the portfolio is deliberate positioning of innovation actions and the relationships drawn between them:

- Designed to engage specific structural elements of the system
- Designed to recognise and engage with the complexity of social systems and the uncertainty of change
- The whole greater than the sum of the parts



A deep demonstration of...

Circular, Regenerative Economies

We are working with the Government of Slovenia and other governments in a deep demonstration of rapid change to a circular and regenerative economy and society. Innovation will tackle material production and waste flows across four key economic systems, and in doing so help a small country to advance health and prosperity.

Circular, Regenerative Economies

Problem owners

The government of Slovenia has the inspiring aim to become the world's first fully circular national economy.



Systems innovation in Slovenia: what it looks like on the ground

Create circular communities



Circular schools



Circular learning & resources



Circular synergies

Foster circular development



Circular discovery process



Circular performance



SME circular innovation support

Circular policy design



Transitions policy lab



Circular procurement



Circular higher education



Forest-based value chains

Built environment

Mobility

Manufacturing

Food system

A deep demonstration of...

Resilient Regions

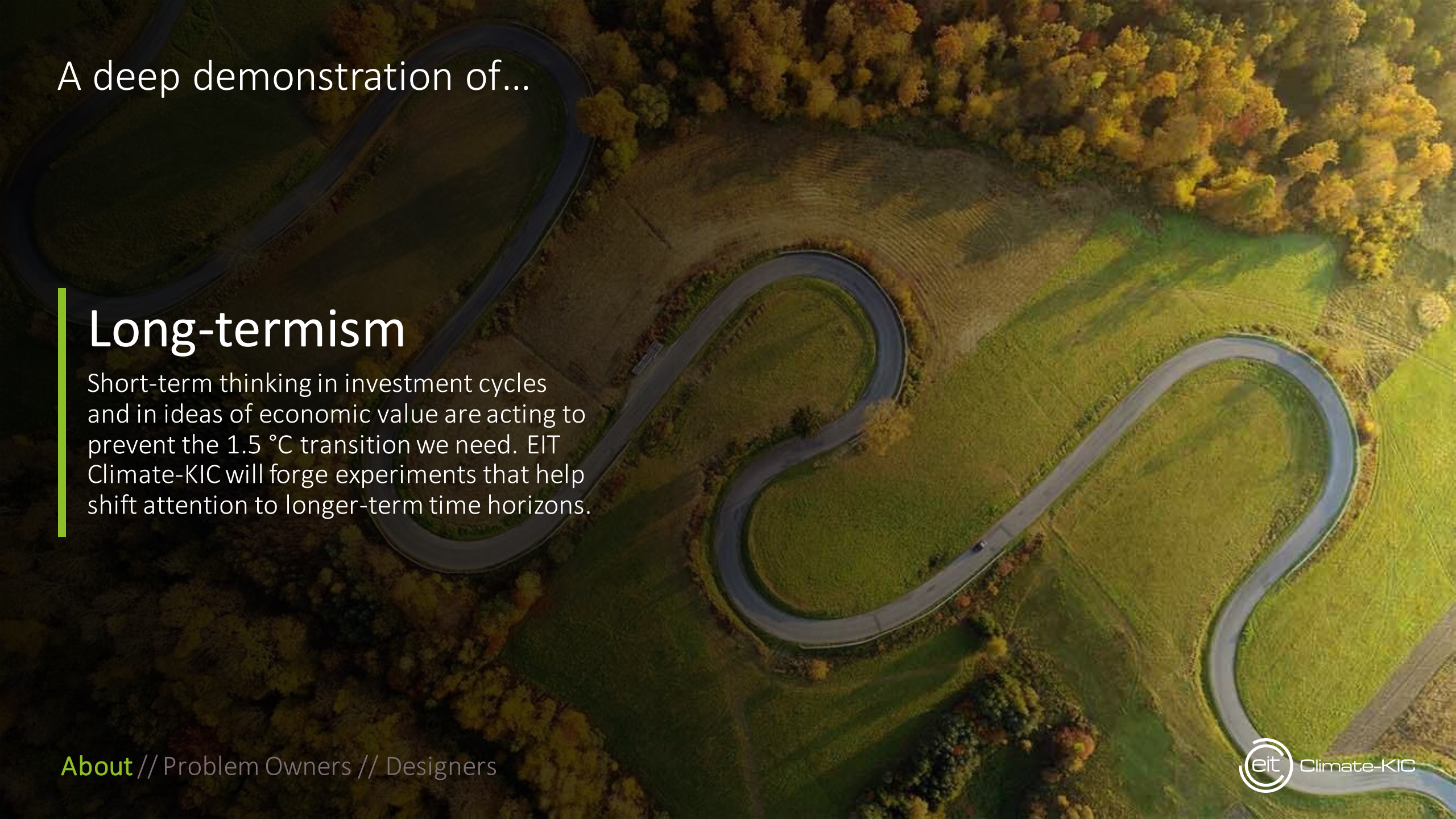
The impacts of climate change involve slow-onset changes, extreme events and increasing systemic risks. Some regions of Europe are particularly exposed to these impacts and are particularly exposed and vulnerable due to the make-up of their landscapes, economies and societies. EIT Climate-KIC will take a systems innovation approach to forging resilience.

Resilient Regions

Problem owners

Challenge owners are looking to shift hazard-by-hazard risk reduction practices in these regions to enable people, communities and systems to withstand and bounce back from shocks, persist through slow-onset stresses and transform through crises.



An aerial photograph of a winding asphalt road that curves through a lush green landscape. The road is dark grey and contrasts with the vibrant green grass and fields. In the upper right, there is a dense forest of trees with yellow and orange autumn foliage. The overall scene is captured from a high angle, showing the road's path as it meanders across the terrain.

A deep demonstration of...

Long-termism


Short-term thinking in investment cycles and in ideas of economic value are acting to prevent the 1.5 °C transition we need. EIT Climate-KIC will forge experiments that help shift attention to longer-term time horizons.

Long-termism

Problem owners

Our design partners are working to identify and engage fruitful 'challenge owners' for this demonstration, ranging from school children to pension funds to the Government of Ireland and the OECD.



A silhouette of a person standing with their arms raised in a gesture of triumph or hope, set against a dramatic sunset sky. A single bird is seen in flight in the upper left corner. The overall mood is one of optimism and forward-looking vision.

In the context of Green Deal Funding and COVID-19 recovery, investing in business model transformation, resilience and renewal through strategic innovation is more relevant than ever, offering to build for the future and and blend public-private value

The European Green Deal Call

Healthy, Clean Cities

- 1
- 2
- 3
- 4
- 5
- 6
- 7
- 8
- 9
- 10
- 11



Circular Economy

- 1
- 2
- 3
- 4
- 5
- 6
- 7
- 8
- 9
- 10
- 11



Maritime Hubs

- 1
- 2
- 3
- 4
- 5
- 6
- 7
- 8
- 9
- 10
- 11



Long-termism

- 1
- 2
- 3
- 4
- 5
- 6
- 7
- 8
- 9
- 10
- 11



Landscapes as Carbon Sinks

- 1
- 2
- 3
- 4
- 5
- 6
- 7
- 8
- 9
- 10
- 11



Resilient regions

- 1
- 2
- 3
- 4
- 5
- 6
- 7
- 8
- 9
- 10
- 11



Food & healthy diets

- 1
- 2
- 3
- 4
- 5
- 6
- 7
- 8
- 9
- 10
- 11



Just Transformations

- 1
- 2
- 3
- 4
- 5
- 6
- 7
- 8
- 9
- 10
- 11



Implementation designed for systemic change

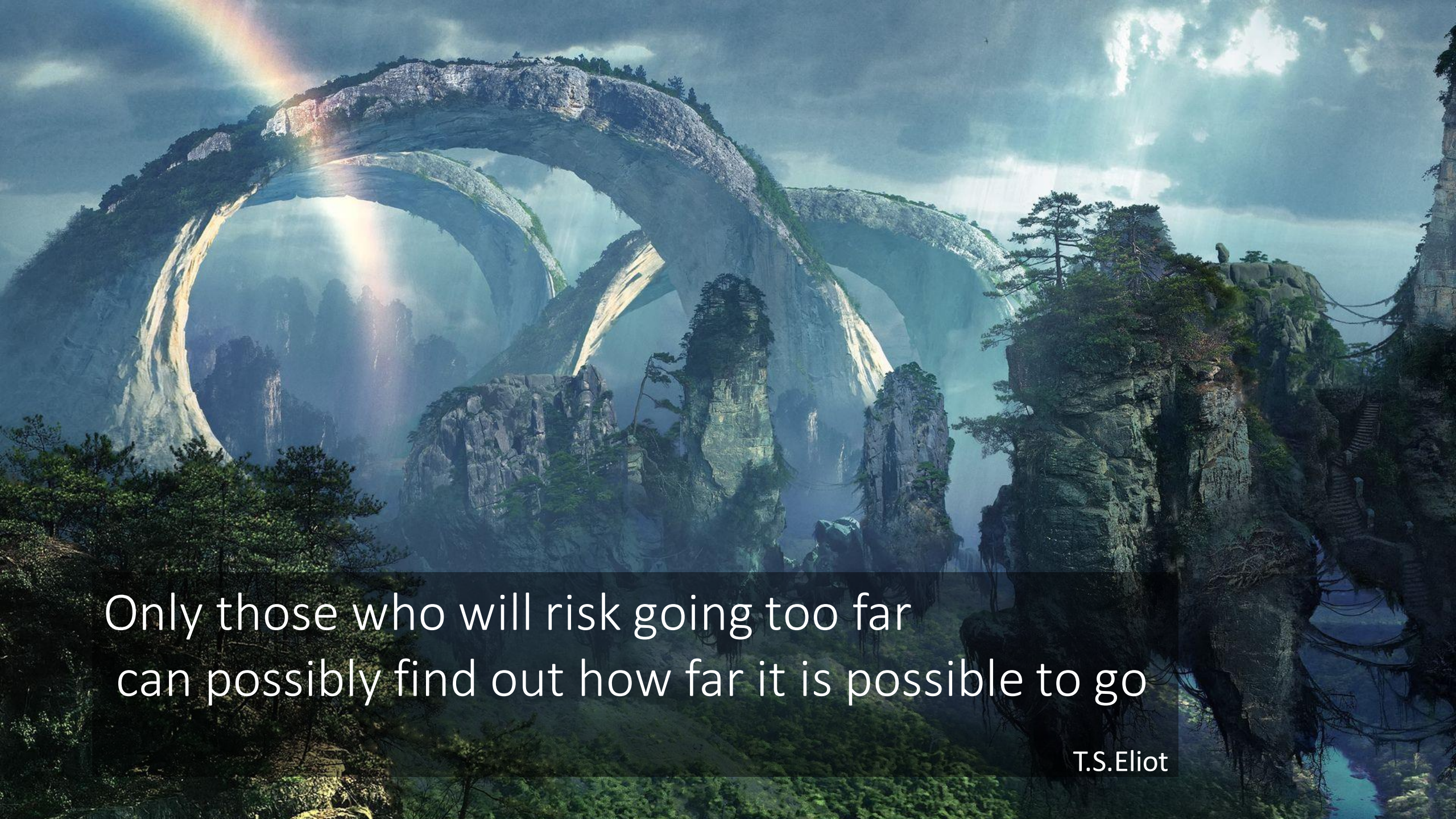
Capability for resilience and renewal

Radical collaborations

New forms of governance

Transformational capital





Only those who will risk going too far
can possibly find out how far it is possible to go

T.S.Eliot



Climate-KIC

climate-kic.org

 @ClimateKIC



EIT Climate-KIC is supported by the EIT, a body of the European Union

Questions & Discussion, Answers?



FS Club



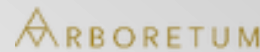


FS Club

Platinum Sponsors



Gold Sponsors



Silver Sponsors



Bronze Sponsors



Personal Sponsors



Thank You

Forthcoming Webinars

- 30 July 2020 (10:00) [Resilience Re: Designing A Public-Private Response To Pandemic & Other Systemic Risks](#)
- 04 August 2020 (11:00) [Esop Sofa – Lockdown Stories: Adapting To Business Life During The Pandemic](#)
- 05 August 2020 (15:00) [CommunityZ Chest – 21st Century Security with Edmund Fitton-Brown](#)
- 06 August 2020 (10:00) [Going, Going, Gone: Natural History Specimens Speak Of Biodiversity Loss](#)

Visit <https://fsclub.zyen.com/events/webinars/>

More added every day..